

SPECIFICATIONS

TA-7800 | ChargePort™

TeleAdapt-designed desktop charging solution. Allows hotels to place AC and USB power outlets where guests need them most. Conveniently located outlets provide the power source guests need to charge smartphones, tablets, laptops and other portable devices. Perfect for bedside placement so guests can comfortably use their device while it's charging. Optional cable management feature provides additional connectivity at the desk or nightstand.

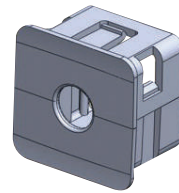
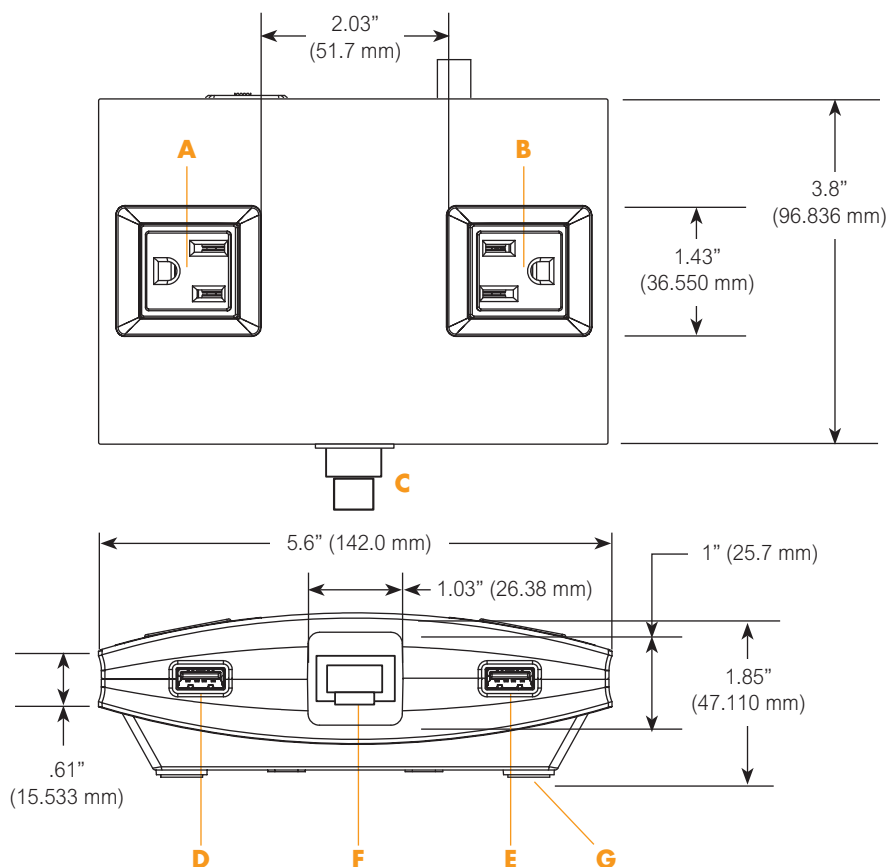


Shown in all black finish with optional Ethernet cable.

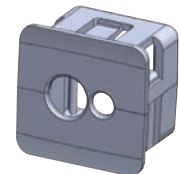
- Provides guests with four easy-to-find charging outlets
- Uniquely designed to sit on desk or nightstand
- Two AC outlets and two USB device charging ports
- High-current/fast-charging USB port supports wide range of portable devices including smartphones and tablets that require higher USB charging current
- Engineered for safety with 10-Amp integrated circuit breaker
- Optional cable chamber allows you to utilize one product for both power charging and desktop cable management
- Includes Ethernet cable, other cable options available and sold separately
- Simple to install, durable construction for everyday use
- No need to commandeer a wall outlet, pass-through power plug replaces wall outlet used to install
- Optional mounting plate for secured horizontal and vertical mounting (sold separately)
- Top surface can be branded or used for guest instructions
- UL Approved



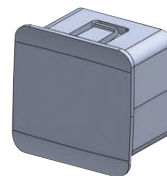
web: www.tsochospitality.com
email: teleadapt@tsoc.com
phone: 1-888-258-8762



H Single-Cable Grommet



I Dual-Chamber Grommet



J Cable Chamber Cover

Features

- A** 120V Power Outlet
- B** 120V Power Outlet
- C** Ethernet Cable 1.8m (6ft)
- D** 1.0 Amp High-Current USB Port
- E** 2.1 Amp USB Port (optimized for tablet computers)
- F** Cable Chamber (see grommet options)
- G** Mounting Plate (sold separately)
- H** Single-Cable Grommet (included)
- I** Optional Dual-Cable Grommet (included)
- J** Optional Cable Chamber Cover (included)
- K** Power Supply Cable, 2.44m (8ft)
- L** Overload Protect Switch
- M** Pass-Through Plug



Optional Mounting Plate (sold separately)

Flat surface mount or right angle edge mount available.
Ask your sales rep for more info.

Certifications

UL Approved

Product Specifications

Weight: Base 0.7 lbs
Base plus PSU cable 1.5 lbs.
Height: 1.85" (47.110 mm)
Footprint: 5.6" W x 3.8" L (142mm x 96.8mm)

Available Colours

Black
White
Black with Brushed Aluminum Top



web:
email:
phone:

www.tsochospitality.com
teleadapt@tsoc.com
1-888-258-8762